


PRODUCT SHEET

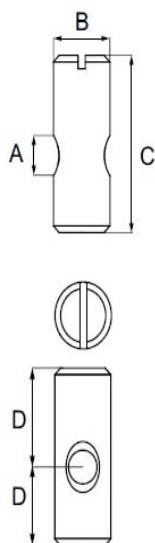
Description:

Cross Dowel $\varnothing 10 \times 14 \text{mm}(8+6)$, M6, Stainless Steel 303

Item number:

12.07.043-0

| Units | Box | Carton | HS Code | Barcode |
|-------|-----|--------|------------|--|
| Pcs. | 1 | 3500 | 7318190090 |  |
| | | | | 5704866023047 |



| A | B | C | D* | Material | Finish |
|----|-----------------------------|-------|--------------|----------|---------|
| M6 | $\varnothing 10 \text{ mm}$ | 13 mm | 8/5 mm | Steel | Plain |
| M6 | $\varnothing 10 \text{ mm}$ | 14 mm | 8/6 mm | Steel | BZP/YZP |
| M6 | $\varnothing 10 \text{ mm}$ | 14 mm | 8/6 mm | Brass | Natural |
| M6 | $\varnothing 10 \text{ mm}$ | 14 mm | 8/6 mm | SS | Natural |
| M6 | $\varnothing 10 \text{ mm}$ | 16 mm | 10/6 mm | Steel | YZP |
| M6 | $\varnothing 10 \text{ mm}$ | 18 mm | 12/6 mm | Steel | YZP/BZP |
| M6 | $\varnothing 10 \text{ mm}$ | 30 mm | 20/10 mm | Steel | BZP |
| M6 | $\varnothing 10 \text{ mm}$ | 20 mm | 10/10 mm | Steel | BZP/YZP |
| M6 | $\varnothing 10 \text{ mm}$ | 25 mm | 12,5/12,5 mm | Steel | BZP |
| M6 | $\varnothing 10 \text{ mm}$ | 30 mm | 15/15 mm | Steel | BZP |
| M6 | $\varnothing 10 \text{ mm}$ | 40 mm | 20/20 mm | Steel | BZP |
| M6 | $\varnothing 10 \text{ mm}$ | 45 mm | 22,5/22,5 mm | Steel | BZP |
| M8 | $\varnothing 12 \text{ mm}$ | 20 mm | 10/10 mm | Steel | YZP |
| M8 | $\varnothing 12 \text{ mm}$ | 25 mm | 12,5/12,5 mm | Steel | BZP |
| M8 | $\varnothing 12 \text{ mm}$ | 30 mm | 15/15 mm | Steel | YZP |
| M8 | $\varnothing 12 \text{ mm}$ | 50 mm | 25/25 mm | Steel | BZP/YZP |
| M8 | $\varnothing 12 \text{ mm}$ | 60 mm | 30/30 mm | Steel | BZP |

SISO A/S

Mileparken 11
DK-2740 Skovlunde
Denmark
VAT: DK 24786013

Phone +45 45 830 900

www.siso.dk
siso@siso.dk

Danske Bank
Nytorv Branch
Copenhagen
SWIFT: DABADKKK

Account no.
4180 3112 112936
IBAN Account
DK7230003112112936